

062636

RECEIVED
LARAMIE COUNTY
CHEYENNE, WY.

West 1/4 corner Section 29 T18N R65W
CERTIFIED LAND CORNER RECORDATION

OCT 5 PM 3 01

DESCRIPTION OF CORNER EVIDENCE FOUND, AND ORIGINAL RECORD (If known)

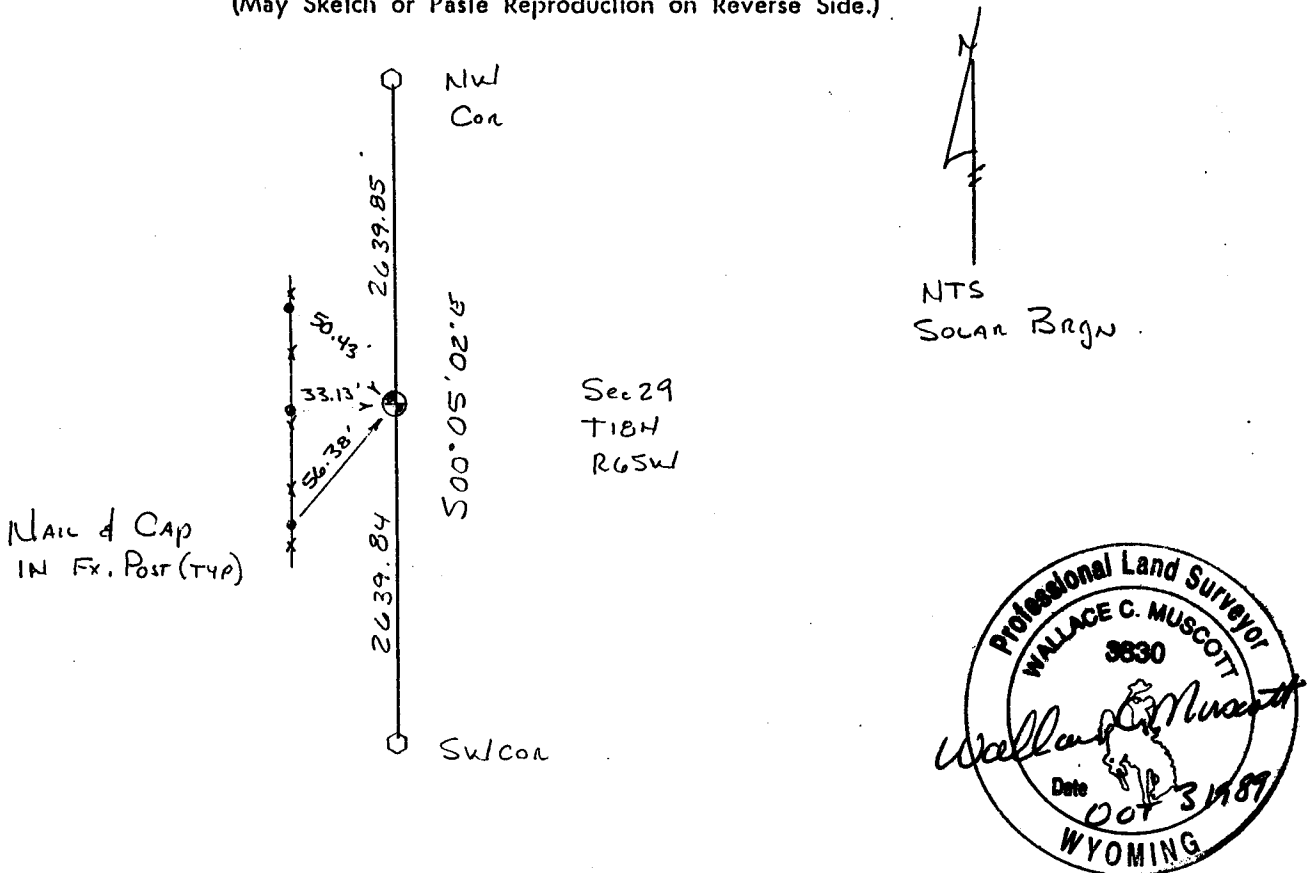
The corner falls in a North South County Road and has been removed. No evidence of the corner or any resurvey was found. The original GLO call was a 18x12x3 Limestone. Called the corner lost and reset by single pro rate method.

DESCRIPTION OF MONUMENT AND ACCESSORIES ESTABLISHED TO PERPETUATE THE ORIGINAL LOCATION OF THIS CORNER:

Set a no.5 rebar with a Corps of Engineers Brass Cap at the pro rate location of the corner. The corner was burried 1' in the road. Tied to an existing fence as shown in the sketch.

AUG 24 1989

SKETCH, WITH COURSE AND DISTANCE TO ADJACENT CORNER IF DETERMINED IN THIS SURVEY. (May Sketch or Paste Reproduction on Reverse Side.)



I, Wallace C. Muscott certify that I have carefully performed or reviewed the work done on the diagrammed corner as reported on this recordation form and approve the same.

Wallace C. Muscott 3830
Signature of Surveyor Registration No.

STATE OF WYOMING,
Office of Clerk and Recorder,
County of _____

This "corner record" was filed for record on the _____ day of _____, 19____, was noted on the cross-index plat and is assigned page No. _____, in book No. _____.

County Official			
Cross Index No.	R 5	T. 18N	R. 65W 6th Mer.
_____	_____	_____	Mer.
_____	_____	_____	Mer.
_____	_____	_____	Mer.
_____	_____	_____	Mer.
_____	_____	_____	Mer.
_____	_____	_____	Mer.